

SECTION C

FY25 YOUTH ACTIVITIES GRANT

GRANT APPLICATION

PROPOSAL CHECK SHEET AND TABLE OF CONTENTS:

Program Title: _____

Organization: _____

CBJ Program Request: **\$** _____ (This amount must match the total amount of request listed on page C-13).

Arrange your proposal according to the table of contents below. Number your pages in the order indicated. **Attach this sheet to the front of your proposal.**

	<u>Page</u>
Title page and authorized signature _____	C-2
Abstract _____	C-3
I. <u>Required Information</u>	C-4
A. Proof of Non-Profit Status _____	C-4
B. Proof of Legal Status _____	C-4
II. <u>Plan of Operation</u>	C-5
A. Extent of Youth Participation _____	C-5
B. Goals and Objectives _____	C-7
C. Program Evaluation Components _____	C-8-9
III. <u>Management Capacity</u>	C-10
A. Past History _____	C-10
B. Instructor/Coach Relevant Experience _____	C-10
C. Volunteer Support _____	C-11
D. Cooperative Efforts _____	C-11
E. Participant Safety/Security _____	C-11
IV. <u>Program Budget</u>	C-12
A. Program Expenditures _____	C-12
B. Program Revenues _____	C-17
V. <u>Proposal Presentation</u>	C-18
VI. <u>Optional Information</u>	C-18
A. Letters of Support (Maximum of 2) _____	C-18

TITLE PAGE:

Program title: _____

Program beginning date: _____

Program ending date: _____

Date that funding needs to be received: _____

Legal name, address, phone, FAX number, & e-mail of organization submitting proposal:

Type of Organization: _____ Corporation _____ Partnership

Sole Proprietorship

Other: (Please describe)

Name of contact person: _____

Contact Address: _____

Phone number: Day _____ Evening _____ Fax number: _____

E-mail address: _____

Does this person have authority to authorize changes to a contract if your group receives one?

_____ Yes _____ No

Authorized Signature (**Person Who Will Sign the Contract**)

Printed Name of Authorized Signature

Title/Position in Organization

YOUTH ACTIVITIES PROGRAM FUNDS

Program Title: _____

ABSTRACT:

Complete an abstract of your proposal. (Single spacing allowed on the abstract - maximum of two pages)

Program Title: _____

I. REQUIRED INFORMATION

Attach this information:

A. Proof of non-profit status

1. Attach a copy of your Federal IRS exemption letter or other information proving your tax-exempt status.*

B. Proof of legal status

1. Attach a copy of your articles of incorporation, or other document that attests to your organization's legal status.*

*** If you have received a Youth Activity Grant and are not providing A or B above you MUST mark the following boxes in lieu of providing proof.**

- ☐ We have received a Youth Activity Grant before and verify that the organization's tax-exempt status has not changed since that time.
- ☐ We have received a Youth Activity Grant before and verify that the organization's legal status has not changed since that time.

Program Title: _____

II. PLAN OF OPERATION (65 Points)

**A. EXTENT OF DIRECT YOUTH PARTICIPATION (Refer to Page B-3 Section II, A):
(55 points)**

1. (a) Identify and describe how many hours each individual youth enrolled in your program will participate. Break down by age group, skill levels, and/or activity groups if hours of participation will vary. Travel hours to and from competition are not allowed.

(b) Identify and describe the total number of hours of participation by all youth enrolled in your program. Break down by age group, skill levels, or activity groups if hours of participation will vary. Travel hours to and from competition are not allowed to be calculated in the active participation tally.

2. How many youth will actively participate in the program?

Program Title: _____

3. List the adult to youth ratio to support the program.

4. Describe the existence and extent of scholarship funding provided for qualified youth within the program. Please describe your process in detail and include a copy of the scholarship request form and/or copy of your scholarship policy. How are participants made aware that scholarship funding is available such as type of application, availability on a website etc. Also include statistics on how many scholarships and the dollar amount awarded during your last season of operation. **(Do not include scholarships provided with CBJ funding)**. If no fee is required for youth to participate and therefore no scholarship is required, please give details so points can be awarded for this category.

5. How will you assist youth in need? (Transportation, equipment, other)
Describe how you communicate to parents/guardians what kind of assistance is available. Attach a brochure or flyer if applicable. Do not include scholarships.

Program Title: _____

B. GOALS/OBJECTIVES/TIMELINES (Refer to Page B-4, Section II, B): (6 points)

This section should include a clear outline of goals and objectives for the program and a brief description of the activities designed to reach each objective (with staff assigned and completion dates.) Goals and objectives should demonstrate how the activity promotes the YAB goal of providing athletic, cultural, artistic or extra-curricular academic experiences for youth. Objectives should be **measurable**, feasible, have time limits and **relate to the more general goal**. Objectives and activities should describe specific accomplishments. Goals and objectives should be clear and concise. There should be at least one goal for each program component that furthers the overall goal of the Youth Activities Program.

Overall Goal of Program:

Objectives (measurable) Prioritize in order of importance	Plan: Activities used to achieve objectives. Person(s) responsible and Timeline.

Attach additional pages as needed.

Program Title: _____

C. PROGRAM EVALUATION COMPONENTS (Refer to Page B-4, Section II, C): (4 points)

Evaluation: How will achievement of this goal be measured?	Timeframe: Schedule for Implementation

Attach additional pages as needed...

Program Title: _____

Evaluation: How will achievement of this goal be measured?	Timeframe: Schedule for Implementation

Attach additional pages as needed

Program Title: _____

III. MANAGEMENT CAPACITY (Refer to Page B-4, Section III): (43 points)

A. PAST HISTORY & ORGANIZATIONAL CAPACITY (11 points)

1. Describe the organization's past history of providing successful youth programs. Please include your history of YAG management accountability regarding program funding, reporting, and submission of a timely program evaluation. (6 points)

2. Attach current organizational chart with name of staff positions. (2 points)
3. Attach current resumes of top personnel within the organization and any special instructors if possible. (3 points)

Note: It is important to include both of these items to ensure that reviewers have a complete understanding of your organization's management structure and capabilities.

B. INSTRUCTOR/COACH RELEVANT EXPERIENCE (13 points)

1. Describe the instructors or coach's relevant experience in providing your youth program.

Summary

Core values:

- **Equality, diversity, inclusion, and empathy** – informs decisions and actions both within and outside organizations.
- **Customer / guest service and hospitality** – based on Disney Institute model, within organizations, everyone has “customers.”
- **Staff support, recognition, and development** – leading by example, organizations are only as strong as their staff.

Brad has availed himself of opportunities to work with both for-profit and non-profit organizations, both professionally and by volunteering his time, efforts, and resources. With degrees in both law and engineering, and licensed to practice law in California, Hawaii and before the United States Patent and Trademark Office, Brad has extensive experience in corporate and non-profit organizations. Brad has managed attorneys, engineers, and other professionals and non-professionals in legal; engineering; human resources; marketing; public relations; environmental, health and safety; security; IT departments, and organizations as a whole. In addition to being a registered patent attorney, Brad has significant experience in copyright, trademark and entertainment law, employment law, non-profit, corporate and securities law, and contract and licensing law.

Non-Profit Experience

2022 to present **Grants Manager, Interim Development Director**

Perseverance Theatre Inc., Juneau, Alaska

Responsible for the administrative and fundraising needs of nonprofit arts organization dedicated to producing professional theatre by and for Alaskans. Responsible for establishing and executing strategic and comprehensive development plan that supports the operating and capital needs of the theatre for the present and the long term. Responsible for individual and business giving campaigns. Responsible for developing and supporting federal, state, local and foundation grants. Responsible for advocating for organization before governmental and regulatory bodies.

2020 to present **Producer, Juneau Live! Studio, RLC Warming Shelter Manager, RLC Food Pantry and Social Service Program Coordinator, RLC Safe Space for Schooling and Facilities Manager**

Resurrection Lutheran Church, Juneau, Alaska

Obtained and managed approximately \$500,000 in grants and contracts from federal, state, city, local, private and religious organizations. Manages the city's cold weather emergency shelter with a highly trained staff dealing with patrons who could not be sheltered elsewhere in Juneau, providing over 3,500 bed-nights during 2021-22 season. As program coordinator for the RLC Safe Space for Schooling program for the first year of the COVID-19 pandemic, hired and supervised staff who worked closely with parents, guardians, teachers, and school counsellors. As producer of Juneau Live! Studio, designed, developed and assembled a secular community-access television studio and YouTube channel (<https://www.youtube.com/c/JuneauLive>). Last season, the studio had over over 10,000 views, over 150 subscribers, and produced and broadcast more than 500 hours of professional, high-quality, Juneau-community access programming. Using a volunteer production staff and crew at no cost to sponsoring community non-profit performing arts organizations. Creator and producer of weekly program on Juneau Radio Center: *RLC on KINY*. Camp director and instructor for Juneau Live! Studio Showrunner Camp, a one-week immersion program in television production where middle and high school students receive instruction from industry professionals and practice those skills in a working TV studio, including making live, public broadcasts each day, such that by week's end, students self-sufficiently produce (with on-screen credit) an episode of Juneau Live! Studio's most popular series (10,000+ views), Alaska Music One Presents concert with local bands, in front of a studio audience. Facilities manager responsible minor repairs and contracting with local vendors for addition work.

2021 to present **Synod Council Member**

Alaska Synod of the Evangelical Lutheran Church in America, Anchorage, Alaska

- 2020 to Present **Vice President of Board of Directors**
JAMHI Health and Wellness, Juneau, Alaska
 Member of finance and quality committees. Served on management union contract negotiation team for two contract renewals.
- 2019 to 2022 **Member of Board of Directors**
Polaris House, Juneau, Alaska
- 2018 to 2020 **General Manager**
St. Vincent de Paul Society, Diocesan Council of Southeast Alaska, Juneau, Alaska
 Responsible for managing the operations and services for one of the major non-profit organizations in Juneau and Southeast Alaska. SVdP provides property management services to affordable housing complexes throughout the area, including financial, accounting, leasing, tenant, grant, funding, and maintenance services. The organization also provides direct aid and transitional services for children, families, individuals and seniors. This can include transitional housing, transitional case work (navigators) and support services (food pantry and second-hand item center). Managed the city's cold weather emergency shelter, securing a long-term operating agreement, along with hosting the city's sobering center. Launched the largest resale store in Southeastern Alaska, which funds much of its operations.
- 2018 **Member of Board of Directors**
The Glory Hall, Juneau, Alaska
- 2016 to present **Co-Founder, General Counsel and Secretary**
TBI Resource Foundation, Juneau, Alaska
 Formed a non-profit foundation supporting individuals with non-sports related traumatic brain injury (TBI). Advise and support the TBI-impaired executive director. Provide legal, marketing, fundraising, accounting, tax and strategic planning for the foundation.
- 2016 to 2020 **Co-Founder, General Counsel and Secretary**
Homes for Truckers Foundation, Valley Springs, California
 Formed a non-profit foundation supporting low-income veterans, government-aid recipients, and tuition assistance grantees support in finding careers. Connecting them with national trucking companies and truck driving schools. Foundation is non-profit arm of for-profit truck driver placement service, commercialdriverplacement.com. Provide legal, marketing, fundraising, accounting, tax and strategic planning for foundation.
- 2013 to 2015 **Chairperson of Above Property Workgroup and Lightweight Messaging Workgroup**
Hospitality Technology Next Generation, Schaumburg, Illinois
 Served as chairperson to two workgroups for the non-profit hotel technology standards organization. Managed the competing interest of technology companies in developing mutually beneficial standards in the area of cloud-computing and meta-computer interface protocols.
- 2006 to 2012 **Chairperson and Board Member Intellectual Property and Technology Section**
Hawaii State Bar Association, Honolulu, Hawaii
 Served on the board of the Intellectual Property and Technology Section for six years, and as chairperson for one of those years. As chairperson, held monthly board meetings, managed budget, planned monthly and annual events, and resolved membership requests and issues for 200+ section members.
- 2011 to 2012 **Executive Committee and Synod Council Member**
Pacifica Synod of the Evangelical Lutheran Church in America, Santa Ana, California
 Elected to serve on both the synod council and the executive committee of the Pacifica Synod, which includes Hawaii, San Diego and California's Inland Empire. Legal advisor the Bishop. Parliamentarian for Synod Assembly.
- 2008 to 2011 **Lay Chairperson, Hukilau (Hawaii) Conference**
Pacifica Synod of the Evangelical Lutheran Church in America, Oahu, Hawaii
 Elected to serve three terms as the chairperson to the Hukilau Conference of the Pacifica Synod. Chaired semi-annual meetings of the conference. Advised the ordained-dean of the conference. Awarded Lay Person of Year at 2012 Pacifica Synod annual assembly.

- 2006 to 2012 **Deputy Vice Chancellor**
Episcopal Diocese of Hawaii, Honolulu, Hawaii
 As one of three Deputy Vice Chancellors, reported to the Diocese Chancellor and Bishop on a variety of matters involving real estate law, employment law, tort law, professional misconduct, intellectual property law and non-profit law.
- 2007 **Producer and Director, Island-Wide Live Television Broadcast of Bishop Ordination**
Episcopal Diocese of Hawaii, Honolulu, Hawaii
 Hired by the diocese to produce the island-wide live broadcast of the ordination of the new bishop to Hawaii on March 17, 2007. The local PBS affiliate loaned the diocese their mobile production trailer, five broadcast cameras/dollies and microwave uplink to their broadcast studio. Trained camera operators, sound technicians, and trailer crew for two weeks prior to broadcast. Viewership on local PBS channel was one of their highest rated events. Additionally, edited, produced and commissioned 1,000 DVDs of the event.
- 2009 **Voting Member, Church-Wide Assembly**
Evangelical Lutheran Church in America, Minneapolis, Minnesota
 Elected to delegation from the Hukilau (Hawaii) Conference of the Pacifica Synod to attend historic 2009 church-wide assembly. Voted on the ELCA Social Statement on Human Sexuality was adopted by a one-vote margin. The church also voted to open its roster to LGBTQ+ clergy.
- 1999 to 2011 **Crisis Line Counsellor, IT Manager**
San Francisco Night Ministry, San Francisco, California
 Work as a crisis line counsellor for a street ministry established over 50 years ago to serve the people of San Francisco Bay Area from 10 pm to 4 am, when no other social services are available. Supported Night Ministers on the streets and talked to callers looking for assistance and often, simply provided someone to listen.
- 2000 to 2002 **Member of Delegation, Attorney, Website Design**
Santa Cruz al Salvador, Santa Cruz, California and Ciudadela Guillermo Ungo, El Salvador
 Traveled with family as members of delegation supporting the community of Guillermo Ungo in a remote area of El Salvador. During the ten-day visit, delegation concentrated on being present with community to develop relationships, increase cultural awareness and understand needs that could be filled in the coming year. Delivered aid that had been collected from the prior year's delegation. Additionally, created organization's non-profit corporation, and established and designed first website.
- 1985 to present **Founder, General Manager**
Perkins Productions, Juneau, Alaska; Northern California; Las Vegas, Nevada; and Oahu, Hawaii
 Provide video production services, including pre-production (storyboard, scripts), production (event, on-location, studio) and post-production (editing, sound mixing, scoring, media distribution). Provide photographic services, including event capture, studio portraits, and editing for print, web and social media. Provide public address (up to eight-piece band) and sound recording services (up to 40-member orchestra or choir) for events and service organizations including school, charity, and fundraising events. Provide catering services (for up to 150 guests) for these events and service organizations. Provide marketed and web designed services to organizations, including foundations and churches.

For-Profit Experience

- 2016 to present **Engineering, Technical, Intellectual Property and Business Consultant**
Juneau, Alaska
 Advise and consult in engineering, technical, intellectual property and business areas for commercial and non-profit companies, including industrial hemp, ridesharing, long-haul trucking and other start-up opportunities. Advise clients on architecture, design, and implementation of products and services.

- 2018 **Director**
Division of Shared Services of Alaska (SSoA), State of Alaska, Juneau, Alaska
Managed division of 135 employees statewide within the Department of Administration responsible for consolidation of travel, accounts payable and collections. Additionally, managed former Division of General Services (DGS), which had been folded into SSoA.
- 2012 to 2018 **Senior Vice President, Engineering, Chief Technical Officer, General Counsel and Secretary**
Fingi Inc., Auburn and San Francisco, California and Bangkok, Thailand
Designed, developed, and implemented a cloud-based ecosystem for a hospitality startup. It interconnects all systems within hotel companies, brands and properties including: – property management system (PMS), point of sale (POS), workflow, booking, CRM/loyalty and in-room systems – with guests using their own mobile devices, and hotel-provided in-room devices. Managed world-wide engineering staff. Additionally, responsible for all legal work, including: corporate, intellectual property, licensing, commercial law and employment law, as well as human resources and marketing.
- 2016 to 2017 **Executive Vice President, General Counsel and Secretary**
Basil and Barns Inc., Auburn, California and New York, New York
Co-founded an outdoor hospitality resort chain combining “glamping” accommodations and a demonstration organic farm. Responsible for all legal work, including: corporate, intellectual property, licensing, commercial law and employment law, as well as human resources, business development and farming.
- 2011 to 2012 **Patent Attorney and Technical Consultant**
Waianae, Hawai'i
Prepared provisional and utility patent applications for international technology companies. Advised and prepared agreements for intellectual property licensing, and other legal areas. Advised clients on architecture, design, and implementation of products and services. Prepared 26 patent applications within a 30-day period for a client transitioning from one food-industrial-giant company to another, subsequently becoming the basis for a \$30 million startup company.
- 2006 to 2011 **Senior Vice President, Administration, General Counsel and Secretary**
Tissue Genesis, Inc., Honolulu, Hawai'i
Managed all legal issues of a stem-cell biotechnology company, including: intellectual property, technology licensing, commercial law, bankruptcy law, real estate law, mergers and acquisitions, securities law, litigation, employment law, international law and international tax planning. Managed all non-financial administrative functions of the company, including: human resources, public relations, marketing, facilities, information technology and telecommunications.
- 2005 to 2006 **Counsel**
Goodsill Anderson Quinn & Stifel, Honolulu, Hawai'i
Developed an intellectual property practice for Hawaii's largest law firm. Practiced in all areas of intellectual property law, including: patents, trademarks, copyrights, licensing, assessment and management. Also practiced in other areas including: corporate law, securities law and employment law.
- 2003 to 2005 **Special Counsel / Acting General Counsel**
Hyperion Solutions Corporation, Sunnyvale, California
Responsible for intellectual property law, employment law, bankruptcy law, marketing law, SEC/SOX compliance, corporate governance, and litigation for a business performance management software company. Designed and implemented office automation and infrastructure projects for a thirty-member legal department.
- 1999 to 2002 **Vice President, General Counsel and Secretary**
Alliance Semiconductor Corporation, Santa Clara, California
Managed all legal issues of a semiconductor company, including: intellectual property, technology licensing, commercial law, bankruptcy law, real estate law, mergers and acquisitions, securities law, SEC compliance, litigation, employment law, international law and international tax planning. Formed and participated in the operation of five venture investment funds and management company. Responsible for administrative departments, including: legal, graphic and web design, human resources and MIS. Supervised professional and administrative employees, including an intellectual property counsel and paralegals.

- 1998 to 1999 **Member of Board of Directors**
Quantum Effects Devices, Inc., Santa Clara, California
- 1998 to 1999 **Vice President, General Counsel and Secretary**
Mission West Properties, Inc. (formerly Berg & Berg Developers), Cupertino, California
 Participated in the establishment and operation of a real estate investment trust, including: real estate law, securities law, and SEC compliance. Additionally, as part-time general counsel for Teledex Corporation, a hospitality telephone manufacturer, managed all legal issues, including: intellectual property, technology licensing and commercial law.
- 1991 to 1998 **Vice President, General Counsel and Secretary**
Valence Technology, Inc., San Jose, California and Henderson, Nevada
 Established and managed legal department for a lithium polymer battery manufacturer, handling intellectual property, technology licensing, commercial law, bankruptcy law, real estate law, mergers and acquisitions, securities law (including an initial public offering and two subsequent public offerings), SEC compliance, litigation (including trade secret and securities class action suits), employment law, international law and international tax planning. Supervised thirty professional and administrative employees, including attorneys and paralegals, in legal, environmental, health and safety, security, human resources, electrical engineering, marketing and MIS departments.
- 1988 to 1991 **Intellectual Property Counsel / Assistant General Counsel**
VLSI Technology, Inc., San Jose, California
 Managed all aspects of intellectual property law including: development of patent, copyright, mask work and trademark programs for an ASIC semiconductor and software company. Responsible for all licensing activities including software licensing, technology licensing, and patent cross-licensing. Formed mid-sized-semiconductor counsel association. Co-managed other legal issues of company, including: SEC compliance, stock and securities transactions, commercial law, real estate law, mergers and acquisitions, and international law. Managed employment law, and patent and commercial litigation. Additionally, was acting-general counsel for company for six months, and general counsel for Compass Design Automation, Inc., a majority-owned software subsidiary.
- 1987 to 1988 **Intellectual Property Attorney**
Hewlett-Packard Company, Palo Alto, California
 Preparation and prosecution of electronics and software patent docket. Legal advisor to HP Labs, the artificial intelligence software group and the medical products division. Performed legal work in all areas of intellectual property, including: patent licensing, copyrights, mask works rights, trademarks and computer law; and in general legal areas, including: licensing, confidentiality agreements, and technology transfer agreements. Supervised outside counsel in patent preparation and prosecution, and in trademark oppositions.
- 1985 to 1987 **Patent Attorney**
Ampex Corporation, Redwood City, California
 Prepared and prosecuted patents in the areas of video and computer technology. Legal and patent advisor to Audio/Video Systems Division. Supervised outside counsel in patent preparation and prosecution. Practiced in all areas of intellectual property, including: patent licensing, copyrights, mask works rights, trademarks, and computer law; and in general legal areas, such as software licensing, and technologically oriented agreements.
- 1983 to 1985 **Patent Attorney**
Xerox Corporation, Rochester, New York
 Prepared and filed patent applications and conducted domestic and foreign prosecution. Counseled a research group, and prosecuted patent interferences before the US Patent and Trademark Office.
- Summer 1982 **Patent Intern**
Xerox Corporation, Rochester, New York and El Segundo, California
 Drafted a patent application, amendments, a software licensing agreement, defensive disclosures, and research memoranda on patent law issues.

1979 to **Manager of Computer Engineering**

1980 *Logitek, Inc., Rochester, Michigan*

Supervised electrical engineers and computer programmers in hardware and software projects in area of computer driven industrial controls for the automotive industry.

1979 **Architectural Electrical Engineer**

Hoyem-Basso Associates, Bloomfield Hills, Michigan

Designed power distribution and communications systems for office and industrial facilities.

Bar Admissions and Certifications

2023 Disney Institute, Disney's Approach to Quality Service

2020 Alaska Notary Public

2019 Certified Food Protection Manager (ServSafe)

2005 United States District Court, District of Hawaii

2005 Hawaii State Bar

1990 Federal Circuit Court of Appeals

1984 United States Patent and Trademark Office

1983 California State Bar

Education

J.D. **McGeorge School of Law**, University of the Pacific, Sacramento, California

1983 Class Rank: Top 11%

Honors: Graduated with Distinction

Law Review, *The Pacific Law Journal*

Dean's List, two years

American Jurisprudence awards for highest grades in contracts and administrative law

Traynor Society, scholastic honor society

Activities: Student attorney at Community Legal Services

Committee chairperson of Phi Alpha Delta Legal Fraternity

B.S.E. **Duke University**, Durham, North Carolina

1979 Major: Electrical Engineering

Activities: President and Performing Arts Committee Chairperson, Student Union

Writer, *The Duke Engineer*, School of Engineering Journal

Director, actor and set designer for many theatrical productions

Board Member, Hoof'n'Horn Musical Theatre Organization

Treasurer, Sigma Nu Fraternity

Professional and Community Organization Memberships, Activities

Member, Association for Computer Machinery (ACM)

Member, Institute of Electrical and Electronic Engineers (IEEE)

Member, Juneau Arts & Humanities Council

Member, Alaska Folk Festival

Member, Juneau Animal Rescue

Member, KTOO Public Radio

Member, Southeast Alaska Food Bank (RCL)

Member, Love, Inc. (RLC)

Member, Family Promise (RLC)

Member and Webmaster, Juneau Housing and Homelessness Coalition (RLC)

Organization Liaison, Boy Scouts of America (RLC)

Speaker and panelist at worldwide conferences on intellectual property licensing, auditing, and protection

Singing, piano and keyboards, handbells (member RLC Bell Choir) and drums

Professional Santa Claus and Trainer, Non-profit Events

Photographer / Videographer, Non-profit Events

Patents

US 5,496,654 Secondary Battery Cell Interconnection for Protection from Internal Shorts
US 5,747,189 Smart Battery

Online Presence

LinkedIn <https://www.linkedin.com/in/bradley-perkins-14699214>
IMDB https://www.imdb.com/name/nm11578037/?ref=nm_sr_srsrg_0
YouTube <https://www.youtube.com/c/JuneauLive>
Facebook <https://www.facebook.com/bradley.perkins.50>
Twitter <https://twitter.com/bradperkins>
Instagram <https://www.instagram.com/basperkins24>
Pinterest <https://www.pinterest.com/UCZVShOscpYclpvGFusSaLog>

References

Scott Ciambor, PMP, Planning Manager, City and Borough of Juneau
155 S. Seward Street, Juneau, Alaska 99801, (907) 586-0753, Ext. 4127, Scott.Ciambor@juneau.org

Chris Schapp, Manager, Southeast Alaska Food Bank
PO Box 33681, Juneau, AK 99803-3681, (907) 789-6184, ducenbark610@gmail.com,
www.sealaskafoodbank.org

Sandy Fortier, Executive Director, Juneau Jazz and Classics
PO Box 22152, Juneau, AK 99802, (720) 256-3777, sandy@jazzandclassics.org, www.jazzandclassics.org

Ericka Lee, Member of Board of Directors, Actor, Perseverance Theatre, Inc., Juneau, Alaska
Host, *Juneau's Open House* on Juneau Live! Studio (<https://www.youtube.com/c/JuneauLive>)

Karen Lawfer, Community Coordinator and Congregation President, Resurrection Lutheran Church
740 W 10th Street, Juneau, AK 99801 (907) 723-2123, klawfer@gci.net, www.rlcjuneau.org

Mandy Cole, Executive Director, AWARE
PO Box 20809, Juneau, AK 99802, (907) 957-6750, mandyoc@awareak.org, www.awareak.org

Riley Woodford, Alaska Folk Festival, Gold Street Music, etc.
(907) 723-7624, riley.woodford.alaska@gmail.com

Guohua Xia, Artistic Director, Juneau String Ensembles
xiaguohua50@gmail.com

Keith Giles, Owner, Alaska Music One
(907) 723-4385, k.giles@alaskamusicone.com

Meghan Johnson, Director JAAM, Juneau School District
(360) 305-9748, meghan.johnson@juneauschools.org

Bruce Simonson, Juneau Bach Society
(907) 586-1352, bruce.simonson@gmail.com

Irene Gallion, Senior Planner, Community Development, City and Borough of Juneau
155 S. Seward Street, Juneau AK 99801, (907) 586-0753, Irene.Gallion@juneau.org, www.juneau.gov

Roy Anderson, Housing Manager, St. Vincent de Paul Society, Juneau
8617 Teal Street, Juneau, AK 9980, (907) 500-8183, roylsvdp@gmail.com, www.svdpijuneau.org

Eran Sherin, Chief Executive Officer, UrbanXtracts Inc. / NY Hemp Source, LLC
1173A 2nd Ave. #102, New York, NY 10065, (907) 297-7248, eran@urbanxtracts.com,
www.urbanxtracts.com

Rev. Lyle Beckman, Former Director of the San Francisco Night Ministry
1031 Franklin Street, San Francisco, CA 94109, (415) 935-7862, lylejb2@aol.com, www.sfnightministry.org

Tamara Walter, Executive Director, TBI Resource Foundation
37 Laurel Lane, Williamsville, NY 14221, (716) 481-6337, tamara@tbiresource.org, www.tbiresource.org

Starr Parmley, Former SSoA Staff Member
2760 Douglas Highway, Apt. 2, Juneau, AK 99801, (907) 942-3849, StarrP@gmail.com

Kenneth Moss, Former SSoA Staff Member
3928 Pyrenean Circle, Anchorage, AK 99516, (907) 230-2064, k2moss@msn.com

The Rev. Karen D Perkins

ROSTERED LEADER PROFILE

Completed: 3/2/2016



Evangelical Lutheran Church in America
God's work. Our hands.

This Rostered Leader Profile (RLP) allows ordained and lay rostered ministers of the Evangelical Lutheran Church in America a way to share information about their faith, skills and passions for ministry. It provides basic introductory information to set a stage for conversations with Call and Search Committees. The RLP is complete once the synodical bishop reviews and approves it for use and once the person selected as the outside reference has submitted the Reference Recommendation form.

PERSONAL MINISTRY STATEMENT

I am called to proclaim God's love in a world, and to a world, desperately hungry for healing through word and sacrament. My strengths and experience in the areas of teaching and relationship building have prepared me to work with struggling communities, helping to claim God's gifts and put them to use towards renewal and growth.

Part I: PERSONAL INFORMATION

Preferred Contact Information

12303 Hidden Meadows Circle			
ADDRESS LINE	ADDRESS LINE2		
Auburn	CA	95603	
CITY	STATE	ZIP	
FOREIGN COUNTRY			
(808)782-6653	(808)782-6653	kieurner@seafare.com	
PREFERRED PHONE	OTHER PHONE	E-MAIL ADDRESS	
Rostered Minister	On Leave from Call	01/15/2005	Pacifica Synod
ELCA ROSTER	ROSTER STATUS	DATE ROSTERED	SYNOD OF ROSTER OR CANDIDACY

Language Proficiencies



English (FLUENT)

PRIMARY LANGUAGE

French
(Conversational)

SECOND LANGUAGE

Spanish (Tourist)

THIRD LANGUAGE

Formal Education

MASTER OF DIVINITY

DEGREE

Pacific Lutheran Theological Seminary

SCHOOL

THEOLOGY

FIELD OF STUDY

Berkeley, CA

CITY, STATE

2004

YEAR

BACHELOR OF ARTS

DEGREE

University of California, Berkeley

SCHOOL

LINGUISTICS

FIELD OF STUDY

Berkeley, CA

CITY, STATE

1990

YEAR

BACHELOR OF ARTS

DEGREE

University of California, Berkeley

SCHOOL

DRAMATIC ARTS

FIELD OF STUDY

Berkeley, CA

CITY, STATE

1990

YEAR

DEGREE

FIELD OF STUDY

YEAR

SCHOOL

CITY, STATE

Life Long Learning Experiences

2009

Applied Suicide Intervention Skills Training (ASIST)

80

YEAR

TOPIC OR TITLE OF CLASS

CONTACT HOURS

2006

Clinical Pastoral Education (Extended Unit)

400

YEAR

TOPIC OR TITLE OF CLASS

CONTACT HOURS

YEAR

TOPIC OR TITLE OF CLASS

CONTACT HOURS

YEAR

TOPIC OR TITLE OF CLASS

CONTACT HOURS



YEAR

TOPIC OR TITLE OF CLASS

CONTACT HOURS

Work History

In chronological order and beginning with the most recent, list up to five significant work experiences.

- | | | | |
|----|--|---|----------------------------|
| 1. | Maluhia Lutheran Church and St. Philip's Episcopal Church
ORGANIZATION
Waianane HI
CITY, STATE | Pastor and Vicar
RECENT POSITION/TITLE
FOREIGN COUNTRY | 2005 - 2012
YEAR |
| 2. | California State Automobile Association (CSAA)
ORGANIZATION
Daly CA
CITY, STATE | Supervisor Learning Support
RECENT POSITION/TITLE
FOREIGN COUNTRY | 1998 - 1999
YEAR |
| 3. | California State Automobile Association (CSAA)
ORGANIZATION
Central CA and Southern NV CA
CITY, STATE | Learning Coordinator / HR Rep.
RECENT POSITION/TITLE
FOREIGN COUNTRY | 1997 - 1998
YEAR |
| 4. | California State Automobile Association (CSAA)
ORGANIZATION
San Francisco CA
CITY, STATE | Safety Consultant
RECENT POSITION/TITLE
FOREIGN COUNTRY | 1996 - 1997
YEAR |
| 5. | California State Automobile Association (CSAA)
ORGANIZATION
San Francisco CA
CITY, STATE | Training Specialist
RECENT POSITION/TITLE
FOREIGN COUNTRY | 1993 - 1996
YEAR |

Current Ministry

ORGANIZATION

RECENT POSITION/TITLE

FULL TIME/
PART TIME

,
CITY, STATE



SIZE

TYPE

CURRENT MINISTRY (A CONGREGATION or AN ORGANIZATION)

ELCA CONGREGATION ID

AVG WEEKLY WORSHIP ATTENDANCE

TOTAL CURRENT BUDGET

MISSION SUPPORT TO THE LARGER
CHURCH

Describe your ministry site as to its characteristics (e.g. rural, ecumenical, multiple point, or agency), purpose and relationship to the larger church.

Part II: COMPETENCIES OR SPECIALIZATIONS

Areas of Expertise

Preaching / Worship Leadership

1.

Youth and Family Ministry

2.

Teaching

3.

Ecumenical Work

4.

Participant in the Larger Church

5.

Areas of Strength

Evangelism / Mission

1.

Ministry with Seniors

2.

Multicultural Ministry

3.

Social Ministry

4.

Recruit and Equip Leaders

5.

Examples of Competencies

*Preaching / Worship
Leadership*

I led two worship services each week for two different denomination churches with different liturgies. I love worship planning, include working with lay worship committees at each church. We endeavored to strike a balance between using familiar materials and introducing newer forms that may appeal to different generations. While I used the same text and sermon outline for both congregations, the sermon was adapted for each context. I used a variety of preaching styles tailored to the text and congregation, including an interactive sermon style that is fairly conversational. I prefer to talking to, or with, rather than at, a community. I was very active in the local Toastmasters and believe that we can all benefit from improved communication and leadership skills. It was my honor to be selected our club's Toastmaster of the year for 2011.



**Youth and Family
Ministry**

I organized and developed an intergenerational, multicultural, ecumenical weekly Bible study and fellowship that was hosted at our home. It grew to over 50 attendees. Portions of the event were geared to the whole group participating together, and portions were separated by age and maturity. This allowed people to benefit from other age groups, while also having material appropriate to their experience. A remarkable feature of the Bible study was the number of youth and teens who attended on their own. They regularly brought friends, knowing it was a safe place where people cared. Much of this group had no prior church experience. As part of this event, we prepared and served meals for the participants. Additional meals were taken home to other family member needing food, and also taken to the homeless on the beaches.

Teaching

I have a deep passion for teaching. Most of my background is in some form of education. In addition to teaching Bible study (as discussed above), I regularly taught confirmation classes at both of the churches. I was one of the teachers of an island-wide, intercongregational confirmation program that met as a large group monthly, I have taught every age group: from preschoolers at daycare, to Sunday school, to adults (including seniors). Before becoming a pastor, I was a corporate trainer and training supervisor with AAA. I've taught religion, customer service, computer skills, dance, and various other content areas. It is difficult to think of a time when I have not been doing some sort of teaching.

Ecumenical Work

Most obviously, I served in an ecumenical call--pastoring one Episcopal and one Lutheran congregation. I participated in the education, colleague fellowship, and assemblies of both denominations. Additionally, for years I volunteered with the San Francisco Night Ministry (and am a current volunteer), an ecumenical organization serving those in need regardless of faith. My clinical pastoral education at the VA, Stanford and Hawaii State Hospital, all required intentional attention to interdenominational and interreligious work. The campus ministry at Stanford University, my internship site, was part of an interreligious organization in which the Lutheran group worked especially closely with the Episcopalians and Roman Catholics. I facilitated a major reorganization at at this internship site in which we began formal dialog about the merging of Episcopal and Lutheran campus ministries with the University Lutheran Church at Stanford.

**Participant in the Larger
Church**

I served as Dean of the Hukilau conference in Hawaii. It is a particularly strong conference in which the pastors and lay leadership meet regularly. We collaborated on confirmation, island-wide and inter-island youth activities, local service ministries and international mission efforts. I am a strong advocate of participation beyond the congregation. Consequently, we had lay people from my congregation serving as conference officers, Women of the ELCA officers, Thrivent officers, synod and diocesan officers. The only two Hawaii participants in the Pacifica Synod's PALLMM (Preparing Adult Lay Leaders for Mission and Ministry) program were from our church. The only voting member from Hawaii at 2009 Churchwide Assembly was from our tiny congregation.

References

Synodical Bishop

Bishop Murray Finck

Pacifica Synod

NAME

SYNOD

(714)692-2791

(714)345-2791

mdfinck@aol.com

DAY PHONE NUMBER

EVENING PHONE NUMBER

E-MAIL



An ELCA Clergy Person

Rev. David Kieffer

NAME

(808)294-1887

DAY PHONE NUMBER

On Leave from Call

ORGANIZATION AND TITLE

(808)294-1887

EVENING PHONE NUMBER

pastordavek56@gmail.com

E-MAIL

Lay Person (Current)

Juli Patten

NAME

(808)590-8262

DAY PHONE NUMBER

School Teacher, Maili Elementary School

ORGANIZATION AND TITLE

(808)590-8262

EVENING PHONE NUMBER

alohaboo@hawaii.rr.com

E-MAIL

Lay Person (Non-Current)

Rita Carlsen

NAME

(408)628-4430

DAY PHONE NUMBER

Retired Montessori School Teacher

ORGANIZATION AND TITLE

(408)628-4430

EVENING PHONE NUMBER

shetops@aol.com

E-MAIL

Supervisor/Colleague

Rev. Donald Fox

NAME

(415)986-1464

DAY PHONE NUMBER

Retired San Francisco Night Minister

ORGANIZATION AND TITLE

(415)333-1097

EVENING PHONE NUMBER

dfoxsf@sbcglobal.net

E-MAIL

Reference Recommendation

Tamara Walter

NAME

(716)481-6337

DAY PHONE NUMBER

tigger_tlw@yahoo.com

E-MAIL

Part III: REFLECTIONS ON MINISTRY

Calling:

You are called as a Child of God and into rostered service in this church. Reflect theologically on your sense of call and the way it shapes your life and work.



I believe that I am a beloved child of God. This truth gives my life meaning, gives me an identity and offers a context for everything else. I understand my sense of call to rostered ministry as growing out of the promises made at my baptism that I would "learn to trust God, proclaim Christ through word and deed, care for others and the world God made, and work for justice and peace." (ELW Service of Holy Baptism p. 228) We are all called to priesthood in our baptisms. The Use of the Means of Grace specifies that "Christians profess baptismal faith as they engage in discipleship in the world. God calls Christians to use their various vocations and ministries to witness to the Gospel of Christ wherever they serve or work." (p. 57) It is my belief that God has given me skills and experiences that are well suited to the ministry of word and sacrament. Discernment doesn't end there, though. I believe we must trust the daily guidance of the Holy Spirit to faithfully live out this calling. I hope that, at some level, everything I say or do is a reflection of God's presence in my life.

Convictions:

Identify the three most prominent themes that others would say are strongly evident in your speaking, teaching, leading and living.

Perhaps predictably for a Lutheran, the overwhelming grace of God is the most prominent theme in my life and ministry. We live in a world desperate to know how much God loves us. Many of the people I encounter are so crippled by their own brokenness, that they find it difficult to believe God could love, forgive and renew them. I am constantly proclaiming the good news that Jesus' love is stronger even than death. Another important theme for me is community in Christ. I strongly believe that our relationship with Christ is lived out through our relationships with each other. Our interdependence is both a gift and a responsibility. Jesus made clear that love of neighbor is God's will for us. We need to value our Christian brothers and sisters as part of ourselves; and we need to serve the larger community as though we are serving Jesus himself. Related to both grace and community is a strong commitment to hospitality. In order live our mission of sharing the Gospel, we must be willing to risk our own contentment in order to make others feel genuinely welcome, wanted and comfortable.

Context:

Describe the ministry setting(s) that would energize you and make the best use of your gifts, skills and passions.

I am most energized when proclaiming the gospel to those who have been previously unchurched or who believe the church might not welcome them. I am passionate about standing with and serving those living in poverty or other types of marginalization. I love to teach classes to people of all ages, but especially teens who might have preconceived notions about Christians or Christian life. I would like to be part of a congregation or community that is courageous and open to change, as well as willing to use creativity to grow in faith. I firmly believe that the church exists for the sake of those outside itself, and would be thrilled to serve in a community that was willing to give itself away. I am most comfortable in a setting in which it is assumed that diversity (linguistic, age, race, gender, orientation, politics, education) benefits all of us. It would be a privilege to work with any group, of any size and configuration, that is excited about what the Holy Spirit is doing in its midst.

Accomplishments:

How has your current ministry setting developed in the last three years, and in what ways have you contributed to this growth or development?



During the time I had been in a two-congregation, two-denomination call, we have went from being an experiment in joint ministry to firmly established in our partnership. While we shared weekly Bible study, holiday worship and events, and 5th Sunday Eucharist, each congregation strongly maintained its own identity. The Bible study we developed together hosted 20-50 people, many of whom have never attended church. More than a dozen teens with no family church connection chose to be baptized and participate regularly in Bible study. Several even became involved in leadership. By emphasizing hospitality and positive interactions, the Sunday School at one of the congregations went from limping to thriving. We introduced the use of technology in worship and thoroughly integrated the AV system. As I helped the congregations claim gifts previously overshadowed by financial limitations, we were able to participate more and more in the conference and synod. During my last two years, we began hosting an island-wide collaboration to feed the hungry.

Denominational Relationship:

What are your hopes for the ELCA? Describe how you help others understand their relationship to the synod and the Evangelical Lutheran Church in America.

I hope that the ELCA will continue to discern God's call for us in the third millennium. I hope we will endeavor to reach out to those people who do not have a faith community, in order to share the message of God's grace through faith for the sake of Christ. I envision a renewed commitment to Bible study, regular worship and prayer. In addition, I hope we will continue to faithfully address sensitive issues that threaten to divide the body. I hope we will courageously experiment with new forms of communication to connect with those who may not speak Lutheranism-ish. I hope we will become more public in working for peace and justice throughout God's creation. Our little congregations were very involved in the ministry of the larger church, from joint confirmation with five other congregations, to several leadership offices in the conference (dean, lay chair, secretary, treasurer), to sending a voting member to churchwide assembly. These congregations have been blessed with financial help from the larger church and are committed to faithful mission support. We also had a pair of sister parishes in California.

Public Ministry:

In your public role as a leader within the congregation or organization, how would you describe your preferred approach, style and manner?

I consider myself joyful, playful, compassionate and hospitable. I am extroverted and enjoy interacting with most people. Aware of my own brokenness, I tend to be tolerant of others' faults and failings. I try to present a positive attitude and believe we should all be conscious of the image we project as church and as Christians. If people have visions and ideas for ministry, I believe in giving them permission and encouragement, then getting out of the way. I generally have a facilitative leadership style, helping others identify and fulfill their gifts and callings. That said, there are times when different styles of leadership are needed, and I believe I am strong, assertive and/or directive when the situation calls for it. Given a choice, I prefer collaboration and teamwork to working independently. I am at my best in interpersonal interaction.

Part IV: CANDIDATE COMMENTARY

The Candidate Commentary is an optional component that allows you to expand your Rostered Leader Profile with information that reveals your passions for ministry, your expertise, your experience or your vision for ministry. You are invited to be creative as you add any commentary that you feel will support this RLP.



The following is a copy of my 2010 annual Pastor's report for Maluhia Lutheran Church:

Thank you. Thank you. Thank you. You are providing a tremendous witness to our community on the Waianae Coast. Not a week passes in which I do not have the opportunity to show Christ's love to one of our neighbors who has no church affiliation. Because you support this ministry, we are able to listen, love and serve people who may not have anywhere else to turn. Imagine losing a loved one, but not having a minister or place for the funeral. People caught in this situation can have their grief magnified by the complexities of planning and paying for a service. Because of your generosity and witness, some of these people are able to contact Maluhia and be cared for in a loving and respectful manner. These people encounter the church as a place of grace and kindness. I encourage you to continue referring people to me when they need spiritual care. Whether or not they ever become part of this congregation, they are touched by the Holy Spirit.

I have to admit that I am grateful 2010 is over. It was a difficult year for so many people we know. In addition to continuing uncertainty with the national economy, parishioners have faced their own issues of health, financial and family concerns. This is not to say that the year was without its bright spots. We saw the return of some brothers and sisters we had been missing. Some who were facing grief and/or health issues appeared healthier and happier at the end of the year. Despite the congregation's ongoing challenges with regular expenses, we were always able to pay the bills. Several individuals and organizations surprised us with substantial gifts throughout the year that helped us stay afloat.

In 2010, it seems that we had some extremes in attendance and participation. During the summer months, we had some of the lowest attendance I've seen since being with you. Even so, a committed core was here every single week. In the winter months, the sanctuary seemed full with you and your friends. Overall, the numbers at the Wednesday night group were a bit smaller than in previous years. That said, the consistency of participation of the "regulars" was astounding. Throughout the year, you provided over 1000 hours of Bible study to almost 100 different people. It is extraordinary for a congregation of our size to have such a high level of attendance at group Bible study. Much of the ELCA is trying to figure out how to get people engaged in the "first language of our faith," and we are already well on the way.

I am hopeful for 2011. Despite our challenges, we are starting new ministries. We have established a small food pantry and discretionary fund so that I can offer immediate help to those in crisis. We are developing a healing ministry so that people can bring their brokenness to this community and be offered restoration and reconciliation. We continue to have youth introduced to Jesus and the Bible, even if their families are unchurched. We provide space to other churches and organizations, allowing them also to serve this community. In a time when the Pacifica Synod and the ELCA have to cut staff and ministry due to sharp declines in giving, we continue to exceed the tithe in our benevolence giving. We will continue to study God's Word with more and more people. We continue to love the young people who need to feel the love of the Lord. We continue to do Christ's work in this community. For this, I say, "Amen."

Aloha,
Pastor Karen

Supporting Information

If requested, are you able to supply the following items?

- * Video recording of a worship, preaching, teaching or speaking occasion?
- * Audio recording of a worship, preaching, teaching or speaking occasion?
- * Most recent Congregation/ Organization Annual Report?

Selected Answer

Yes

Yes

Yes



* Samples of writing or communication pieces from your ministry?	<u>Yes</u>
* Letters of Reference?	<u>Yes</u>
* Resume or curriculum vitae?	<u>Yes</u>

Comments or Explanations (Regarding this RLP)

Disclosure Information

Out of care for the church, the following questions are asked of all rostered leaders and First Call candidates who are making themselves available for conversation with call committees.

Have you ever engaged in, been accused of, charged with, or convicted of illegal conduct or a crime, including conduct resulting in suspension or revocation of your driver's license?	No
Do you have any addictive behavior, including a history of drug, alcohol, or pornographic addictions that might interfere with your ability to serve or continue serving as a rostered leader?	No
Have you ever engaged in, been accused of, investigated for, sued, or charged with sexual misconduct, sexual harassment, substance abuse, child or spousal neglect or abuse, or financial improprieties?	No
While in candidacy or on the roster, have you ever engaged in, been accused of, investigated for, charged with, or disciplined for any conduct proscribed in <i>Definitions and Guidelines for Discipline</i> ?	No
Are you living in accord with <i>Vision and Expectations</i> and <i>Definitions and Guidelines for Discipline</i> for rostered persons in the ELCA and do you intend to continue to live in compliance?	No
Have you ever engaged in any behavior or been involved in any situations that, if they became known to the church, might seriously damage your ability to begin or continue in ministry?	No

Comments or explanations to Disclosure questions:

Certification

I, The Rev. Karen D Perkins, certify that the information contained in this Rostered Leader Profile which is dated 3/2/2016 6:22:59 PM is correct and accurate to the best of my knowledge. If there are any significant changes, I will update this form promptly. I further certify that I have agreed to, signed and forwarded the Authorization and Release of this Rostered Leader Profile.



Agreed

The Rev. Karen D Perkins

3/2/2016 6:22:59 PM

AGREE/DISAGREE

CERTIFY BY

CERTIFY DATE

Reviewed

This Rostered Leader Profile for The Rev. Karen D Perkins was reviews by Bishop Bishop Murray Finck of the Pacifica Synod and approved for posting to the ELCA's Mobility Database System on 3/2/2016 6:22:59 PM.



Part V: ADDITIONAL INFORMATION

This section of your RLP is intended only for your Synod Bishop's information as the bishop seeks to identify suitable candidates for call to congregations and church-related organizations.

Personal Information

	10/28/1968	Female	White / Caucasian		
	DATE OF BIRTH	GENDER	ETHNICITY		
Present Relationship	Married or engaged	Bradley S. Perkins	Attorney	No	No
	RELATIONSHIP STATUS	SPOUSE NAME	PROFESSION	ELCA ROSTERED?	ELCA CANDIDACY?
Prev. Spouse(s):	SAME GENDER PARTNER NAME:	PROFESSION:	ELCA ROSTERED?	ELCA CANDIDACY?	
	SPOUSE NAME	DATE OF MARRIAGE	MARRIAGE ENDED BY:		
Prev. Partner(s):	SPOUSE NAME	DATE OF MARRIAGE	MARRIAGE ENDED BY:		
	NAME	DATE OF BEGINNING	DATE OF ENDING		
	NAME	DATE OF BEGINNING	DATE OF ENDING		

If you have more than two previous spouses or previous partners mark here and give details in a letter to your synodical bishop. ☐

Comments or Explanation - Relationships

Children

List the name and ages of any children who live with you in your household.

Daniel Perkins 30



NAME	AGE	NAME	AGE
NAME	AGE	NAME	AGE
NAME	AGE	NAME	AGE

Health or Special Needs Requirements

HEALTH /HOUSEHOLD REQUIREMENTS /SPECIAL NEEDS **NO**

Special Considerations

I am actively seeking a call.

6/1/2012

OPENNESS TO CALL

DATE AVAILABLE

Special Considerations (check all that apply):

- Certified by Evangelical Outreach and Congregational Mission for Mission Development ☐
- In conversation with ELCA Global Mission ☐
- Interested in pursuing graduate or other studies ☐
- Skilled/experienced in multi-cultural ministry ☒

Geographic Preference

OPEN TO GLOBAL SERVICE

1A,1B,1C,1E,2A,2B,2C,7B,7C,7D,8G,9A,9B,9E,

REGIONS/SYNOD

Ministry Preferences

Ministry site

Congregations

- ☒ Organized ☒ New mission ☒ Redevelopment ☒ Bilingual/
start Multicultural

Preferred size of congregation

- ☒ 1-50 ☒ 51-100 ☒ 101-150 ☒ 151-250 ☒ 251-400 ☒ 401-700 ☒ Over 700

Preferred parish types

- ☒ Single site ☒ Two-point
parish ☒ 3 or more point
parish ☒ Ecumenical



Church-Related Organizations

- | | | | |
|--|---|--|-----------------------------------|
| <input type="checkbox"/> Camp or Conference Center | <input type="checkbox"/> Military | <input type="checkbox"/> Hospice | <input type="checkbox"/> Seminary |
| <input checked="" type="checkbox"/> Social Ministry Organization | <input type="checkbox"/> Prison | <input type="checkbox"/> Hospital | <input type="checkbox"/> School |
| <input checked="" type="checkbox"/> Ecumenical Organization | <input checked="" type="checkbox"/> College or University | <input checked="" type="checkbox"/> Residential Care | |

Synodical and Churchwide Ministries

- | | | |
|--------------------------------------|---|---|
| <input type="checkbox"/> Synod Staff | <input type="checkbox"/> Churchwide Staff | <input type="checkbox"/> Global Service Setting |
|--------------------------------------|---|---|

Ministry position

- | | | | |
|---|--|--|---|
| <input checked="" type="checkbox"/> Solo Pastor | <input checked="" type="checkbox"/> Senior Pastor/ Head of Staff | <input checked="" type="checkbox"/> Associate/Assistant Pastor | <input type="checkbox"/> Program Staff |
| <input checked="" type="checkbox"/> Campus Ministry | <input type="checkbox"/> Chaplain | <input type="checkbox"/> Administrator | <input checked="" type="checkbox"/> Intentional Interim |
| <input checked="" type="checkbox"/> Professor /Teacher/Educator | <input type="checkbox"/> Youth and Family Ministry | <input type="checkbox"/> Music Ministry | <input type="checkbox"/> Camping Ministry |
| <input type="checkbox"/> Pastor Developer/ Redeveloper | <input type="checkbox"/> Other Specialized Ministry | | |

Type of Position: Full-Time

Community Size

- | | | |
|--|---|--|
| <input checked="" type="checkbox"/> Rural | <input checked="" type="checkbox"/> Small town (under 10,000) | <input checked="" type="checkbox"/> Small city (10,000-49,999) |
| <input checked="" type="checkbox"/> Medium city (50,000-249,999) | <input checked="" type="checkbox"/> Suburb near a medium City | <input checked="" type="checkbox"/> Large city (250,000 or more) |
| <input checked="" type="checkbox"/> Suburb within 10 miles of a large city | <input checked="" type="checkbox"/> Suburb outside 10 miles of a large city | |

Community Type

- | | | |
|---|---|--|
| <input checked="" type="checkbox"/> Bedroom community | <input checked="" type="checkbox"/> College or University | <input checked="" type="checkbox"/> Farming |
| <input checked="" type="checkbox"/> Industrial | <input checked="" type="checkbox"/> Inner city | <input type="checkbox"/> Mining/logging |
| <input type="checkbox"/> Ranching | <input checked="" type="checkbox"/> Resort | <input checked="" type="checkbox"/> Retirement |

Current Annual Compensation

Indicate your current Defined Compensation. "Defined Compensation" is described by Portico Benefit Services as the gross cash salary paid to the staff member. In the case of clergy, Defined Compensation includes any housing allowance (whether in cash or the annual cash value of a parsonage), Social Security Tax offset, and /or furnishings allowance if paid directly to the staff member.

\$60,000 - \$65,000

CURRENT ANNUAL COMPENSATION

Synod Guidelines

MINIMUM COMPENSATION FOR NEXT CALL



Discernment Process

I have been On-Leave-from-Call (OLFC) since June 2012. Funding for my last call was cut not long after my husband was laid-off his position as Vice President, General Counsel at a bio-technology startup in Hawaii. With the severe downturn in the US economy, he was only able to find a position with a hospitality technology startup in Bangkok, Thailand in April 2012. Unfortunately, there were very limited Christian ministry opportunities for me in Bangkok, and I was unable to find a call during years we were living there. In 2014, he moved the company's engineering offices to San Francisco, and we relocated in September 2014. While intending to actively seek a new call at that time, a number matters effectively thwarted my ability to do so. These included extremely volatile financial circumstances, lack of stability with our living location and multiple family crises requiring my presence attention. These issues have been resolved or addressed to the extent that I am now flexible and fully available for ministry. I learned in November that I had been approved by the ELCA Conference of Bishops and the Pacifica Synod to continue OLFC status. I will be enrolling in an appropriate interim ministry course in the Spring.

Final Comments or Explanations - To the Bishop

My husband is a hi-tech patent attorney who is most likely to find work in a metropolitan area or from home. He is also a huge asset to any ministry. He was active in both congregations, helping with all technology needs, including worship audio-visuals. He was also active in both the synod and diocese. He served as lay chair of the conference, served on synod council and was a member of the Pacifica Synod executive committee. He served as a deputy vice-chancellor for the Episcopal Diocese of Hawaii. It is his desire and expectation to remain involved in ministry wherever our next call is.



AUTHORIZATION AND RELEASE


ROSTERED LEADERS: A signed copy of this page of the Rostered Leader Profile **MUST** be mailed, faxed or emailed as a PDF attachment to your synodical bishop and to the person filling out your reference form. Your profile is not complete without this page being on file in your synod's office.

CALL or SEARCH COMMITTEES: A signed copy of the Authorization and Release should be forwarded to those references and others who are being asked for a recommendation or comment.

AUTHORIZATION AND RELEASE

I, **The Rev. Karen D Perkins**, authorize any references, supervisors, ELCA agencies, or any other person or organization to give the congregation, agency, institution or organization any information (including opinions) regarding my character and fitness for ministry. I also release any individual, employer, congregation, ELCA agency, institution, organization, or official, reference, or any other person or organization providing information, from any and all liability for damages of whatever kind or nature which may exist at any time on account of compliance or any attempts to comply with this authorization, excepting only the communication of knowingly false information.

A facsimile, photocopy or electronic copy of this Authorization and Release shall be valid as the original.



SIGNATURE

March 2, 2016

DATE

APRIL DOOLEY

31864 Whitfield Street * Menifee, Ca 92584 * 661/645-5335

EDUCATION

Bachelor of Arts in Music Education, San Diego State University * December 1995 GPA 3.69
Single Subject Credential * December 1995 GPA 4.0

VOCAL INSTRUCTORS

Mary MacKenzie * Jane Randolph * Susan McBerry * Lloyd Mallett

TEACHING EXPERIENCE

Saugus High School, Teacher, Director of Choral Activities - September 1997-January 2019
Santana High School, Teacher, Director of Choral Activities - September 1996- May 1997
Chaparral High School, Teacher, Director of Choral Activities - September 1996 – May 1997

Duties include: Selecting repertoire to promote musical growth and knowledge; Scheduling and facilitating concerts, rehearsals, festivals, competitions, tours, camps, auditions, community outreach events; Introduce basic musicianship skills and theory practices, design sets and wardrobe; Develop proper vocal and choral techniques; instruct students in performance and choreography practices; counsel them in post high school career and educational opportunities; In charge of the budget and all fundraisers for the program.

CHORAL DIRECTOR

San Diego Youth Master Chorale, 3rd- 8th Grade - 1994-1997
Foothills United Methodist Church, 1st-5th Grade
College Avenue Baptist Church, K-1st Grade - 1989- 1992

PERFORMANCE

Hollywood Bowl Orchestra Choir - 13 years	San Diego Opera - 3 years
San Diego Comic Opera - 4 Years	Youth for Christ - 2 years
San Diego Gilbert & Sullivan Opera Co. - 2 years	San Diego Choral Artists - 3 years
Ala Kujala Music Company - 10 years	Sustitute Soloist S.D. Churches – 3 years

ADMINISTRATIVE

Music Instructional Assistant, San Diego Mesa College 1992-1994

Worked as a student advisor and tutor; Supervised office workers; Maintained music library; Office files and Supplies; Typing and Program design; Operated office equipment; Acted as a teacher's aid.

Legal Administrative Assistant, Thorsnes, Bartolotta, McGuire & Padilla Law Firm 1987- 1991

Provided customer assistance and public relations; Analyzed and planned budgets; Maintained closed case files and updated law library; Researched office products and wrote purchase proposals; Contracted and monitored vendor services and contracts; Ordered supplies and equipment.

HONORS AND AFFILIATIONS

Saugus High Teacher of the Month, Santa Clarita Mayor's Award, L. A. Mayor's Award, Published Poet Award, Who's Who Among American Teachers multiple Awards, Pi Kappa Lambda Music Honor Society member, ACDA member, SCVA member CMEA_MENC member, Mortar Board invitation- SDSU, Chorister's Guild.

SKILLS

Proficient on PC and MAC, music composer & arranger, piano & voice instructor, leadership and management skills, teamplayer, personal management skills, strong work ethic, creative, resilient, willing to learn, positive attitude..

Tamara L. Walter

37 Laurel Lane
Williamsville, New York 14221
(716) 481-6337

PROFESSIONAL CERTIFICATIONS

New York State Provisional Certification in Elementary Education Grades PreK - 6
New York State Provisional Certification in Middle Childhood Specialist Grades 5-9
New York State Provisional Certification in Middle Childhood Generalist Grades 5-9
New York State Provisional Certification in Biology Grades 7-12
New York State Provisional Certification in General Science Grades 7-9
New York State Provisional Certification in Students with Disabilities Specialist Grades 5-9
New York State Provisional Certification in Students with Disabilities Grades 7-12
Hawaii State Certification in Science Grades 7-12
Hawaii State Certification in Special Education Mild / Moderate Science Grades 7-12
Hawaii State Certification in Math Grades 7-12
Hawaii State Certification in Special Education Mild / Moderate Math Grades 7-12

EDUCATION

Master of Special Education - Canisius College, *Buffalo, New York* • May 2005 Cum Laude
Bachelor of Science in Education - Medaille College, *Buffalo, New York* • May 2003 Magna Cum Laude
Associate in Liberal Arts and Sciences - Niagara County Community College, *Sanborn, New York* • May 2001 Honors

PROFESSIONAL EXPERIENCE

Ewa Makai Middle School, Oahu, Hawaii

- 7th and 8th Grade Special Education Teacher / Co-Teacher - Math, Science, U.S. History, and English, Special Education Teacher - Math, Advisory Teacher - Inclusion Class • July 2011 - October 2013

Kapolei High School, Oahu, Hawaii

- 9th Grade Special Education Teacher / Co-Teacher - Math, Science, U.S. History, and English, Advisory Teacher - Inclusion Class • July 2010 - June 2011

Waianae High School, Oahu, Hawaii

- 9th Grade Special Education Teacher - Math, Science, U.S. History, and English • August 2006 - June 2007

Pinnacle Charter School, Buffalo, New York

- 7th Grade Teacher - Math, Science, U.S. History, and English • September 2005 - February 2006

Clarence Central School District, Buffalo, New York

- Special Education Teacher - Regular Substitute Position • February 2004 - June 2005
- Substitute Teacher • September 2003 - February 2005
- Clarence High School Home Instruction Teacher - Special Education • October 2004 - January 2005
- Clarence High School Summer School Living Environment Teacher - Special Education • June 2004
- Clarence High School Living Environment Regents ASI Review Teacher • June/August 2003 and 2004

Erie 1 BOCES, Buffalo, New York

- Summer School Living Environment Teacher - 2005

Private Tutor, Buffalo, New York

- English, Science, Global, Math, and French • September 2004 - present

Canisius College, Buffalo, New York

- Teacher Assistant for Human Anatomy Physiology • Fall 2004

STUDENT TEACHING

- Buffalo City School Olmsted #56 Gifted and Talented and Health, grades 6-8 December 2002 –January 2003
- Clarence High School Biology, grades 9 and 10 • January 2003 – February 2003
- Dodge Elementary School Multi-age, grades 1 and 2 • March 2003 – May 2003
- Clarence High School Inclusion/Resource • May 2004 – June 2004

RELATED EXPERIENCE**Powder Ridge Day Camp, Connecticut**

- Assistant Director/Aquatic Director • Summer 2001
- Directed activities in community outreach programs and conflict resolution skills with staff and camper

Kids Korner, Buffalo, New York Preschool Teacher • April 1999 - March 2001

- Instructed children in activities that were designed to promote social, physical, and intellectual growth

Professional Development Presenter

- The Student Behind the Mask - coping with Attention Deficit/Hyperactivity Disorder, Learning/Emotional Disabilities, and Traumatic Brain Injury - KenTon School District (9 hour course) • March 2004
- The Perfect Student - coping with Attention Deficit/Hyperactivity Disorder and Learning Disabilities Staff Development Day at Williamsville South High School • October 2002
- Guest presenter for area colleges - coping with students with disabilities in the college setting and the transition from high school to college • 2001

OTHER CERTIFICATIONS and ACTIVITIES

- American Red Cross - certification in CPR and First Aid
- American Camping Association - professional development with certification for camp director positions
- Awarded Who's Who Among Students in American Colleges and Universities • 2003
- Event Supervisor for New York State Science Olympiad Regional Competition • 2003 - present
- Mystic Aquarium Institute For Exploration - volunteer with Beluga whales husbandry staff • Summer 2001
- Director of Upstate New York Young Adult Lutheran Leadership • 1998 - 2003
- Director of Children's Cherub Choir at St. Paul's Eggertsville Lutheran Church • 2003 - present
- Member of Buffalo New York Lord's Talents - volunteer at nursing homes and hospitals • 1998 - 2000

Clarice Bethers

7336 Tartanilla Circle, Citrus Heights, CA 95621
808.782.2036 | claricebethers@gmail.com

Experience

2016 to **Preschool Teacher**
2021

Bright Horizons Family Solutions, Everett, Washington and Sacramento, California

Lead teacher / resource teacher for a national pre-school chain. Everett pre-school located in Everett Boeing factory facilities, and Sacramento pre-school located in the federal government campus. Generally, taught one- and two-year old children.

2021 **Church Office Administrator**

Resurrection Lutheran Church, Juneau, Alaska

Responsible for production of all worship materials, weekly bulletins, PowerPoints, announcements, and congregation email reminders. Maintained church's Wordpress website and Facebook page, including its online event and facility calendar. Curated social media and chats for the church's streaming events, including worship services and community outreach television programming.

2020 to **Supervisor**
2021

Safe Space for Schooling Program, Resurrection Lutheran Church, Juneau, Alaska

While on COVID-19 pandemic hiatus from current position as preschool teacher, ran one of three sites in Juneau, Alaska funded under a CARES grant for students (1st to 12th) to drop-in to attend Zoom classes, receive instructional aid and be fed breakfast and lunch during remote learning school hours. Supervised a staff of three teachers and several church volunteers supporting 20+ students. The program was recognized by the Juneau School District and its superintendent. I was recognized by NAMI Juneau and the Suicide Prevention Coalition for exceptional work helping children in the community.

2015 to **Preschool Teacher**
2017

YMCA Preschool, Everett, Washington

Fill-in and substitute teacher. Also did preschool openings and closings.

2015 to **Chef and Preschool Teacher**
2016

Way to Grow Early Learning Center, Everett, Washington

Prepared meals and snacks for 50+ student preschool. Acted as floating and substitute teacher for all classrooms, from infants through pre-kindergarten. Assisted in classroom clean-up and organization, when needed.

2014 to **Lead Preschool Teacher**
2015

YMCA Preschool, Everett, Washington

Instructed toddlers in activities that were designed to promote social, physical and intellectual growth. Prepared daily lesson plans, including seasonal themes, meeting school curriculum and other requirements. Created attractive learning environment (bulletin boards, etc.). Participated in water classes. Supervised assistant teacher.

Certifications

2022 First Aid and CPR / CPR Trainor for the American Red cross

Education

Sierra College, Rocklin, California

Early Childhood Education 12 core units with an infant toddler course

Waianae High School, Waianae, Hawaii.

Graduated 2008

ROTC 2004 to 2007

Recognition 2008 for Exceptional Math and Reading Skills

Early Childhood Education 34 Units

Graduating with my AA from Sierra College in fall of 2023

Certificates of Appreciation Maluhia Lutheran Church / St. Philip's Episcopal Church,
2009-2010

Recognition

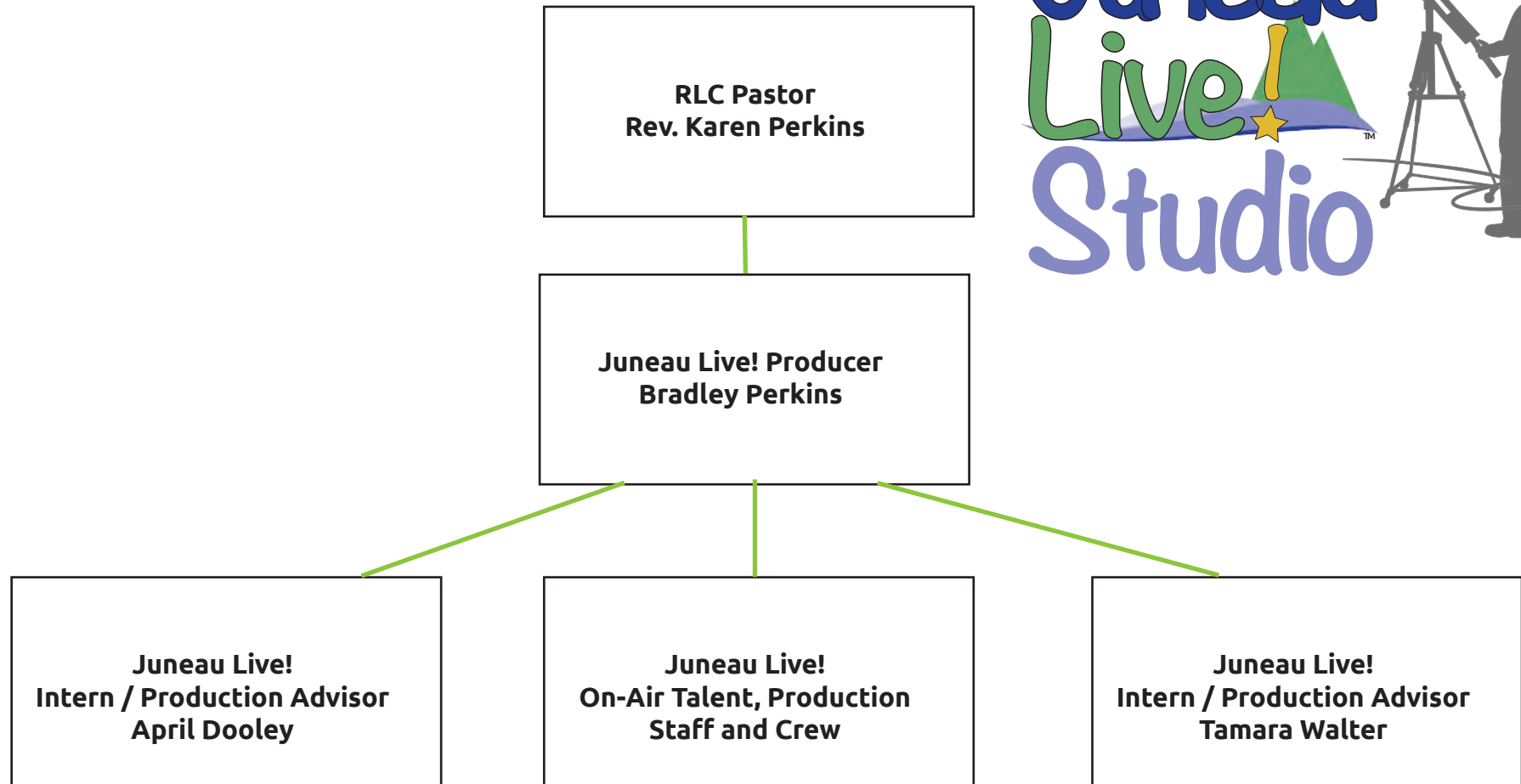
2021 NAMI Juneau Exemplary Caregiver

Personal

2012 **Church Council Member**

to 2013 *Faith Lutheran Church, Everett, Washington*

**Juneau Live!
Organization Chart**



Program Title: _____

C. VOLUNTEER SUPPORT (8 points)

1. Explain the amount of volunteer support there will be for the program.

(a) How many volunteers will be helping you?

(b) How many total hours of volunteer support do you anticipate?

(c) What will the volunteers be doing?

(d) If applicable, please identify your volunteer fundraising goals, objectives, and desired results.

D. COOPERATIVE EFFORTS (5 points)

1. Describe cooperative efforts with other local youth organizations and the extent of their involvement in planning for the proposed program.

E. Safety/Security (6 points)

1. Describe how you assure the safety/security of your participants.

Program Title: _____

IV. PROGRAM BUDGET/ORGANIZATION SUPPORT: (34 points)

- Include a prior fiscal year financial statement and listing of current and anticipated funding sources for your organization. If not available, please explain why.

A. PROGRAM EXPENDITURES (Refer to Page B-5, Section IV, A1) (25 points possible)

1. Arrange in the following format:

<u>PROJECT REQUEST</u>	+	<u>OTHER INCOME</u>	+	<u>IN-KIND</u>	=	<u>PROJECT TOTAL</u>
----------------------------	---	-------------------------	---	----------------	---	--------------------------

A. Personnel Services:

(List persons involved
In project)

Subtotal Personnel Services

B. Travel

(Who, where, number of trips, cost)

Subtotal Travel

<u>PROJECT REQUEST</u>	+	<u>OTHER INCOME</u>	+	<u>IN-KIND</u> =	<u>PROJECT TOTAL</u>
----------------------------	---	-------------------------	---	------------------	--------------------------

C. Facility
(Itemize)

Subtotal Facility

D. Supplies/Materials

(Itemize in general categories)

Subtotal Supplies

E. Equipment

(Itemize rentals, lease purchase
Agreements, etc.)

Subtotal Equipment

F. Other Operating
(Itemize)

Subtotal Other Operating

G. Total

(Total the subtotal of A through F)

(This amount must match the total amount requested on page C-1)

PROGRAM EXPENDITURES**Juneau Live! Studio TV Production Camps****A. Personnel**

Juneau Live! Studio Producer & TV Production Program Dir / Programs Mgr

RLC Pastor Instructor Sets / Lighting / Makeup / Wardrobe

Subtotal Personnel

B. Travel

Three licensed teachers w/TV prod. exp. (one SPED)

Subtotal travel

C. Facility (Itemize)

Allocated high-speed internet pipe for live streaming

Allocated facility utilities

Allocated facility janitorial

Subtotal Facility

D. Supplies/Materials

Preproduction supplies (storyboards, project proposals, etc.)

Makeup, hair, wardrobe

Craft Service / Catering during camps (utilize SE AK Food Bank)

Subtotal Supplies/Materials

E. . Equipment (Itemize rentals, lease purchase agreements, etc.)

Allocated use of production web services

Allocated use of production copyright licenses

Allocated use of production software licenses

Specialized production equipment (depends on project)

Subtotal Equipment

F. Other Operating (Itemize)

Juneau Live! administration, scheduling, marketing

Subtotal Other Operating

G. Total (Total the subtotal of A through F)

Project Request	Income	In-Kind	Total
		\$ 4,000.00	\$ 4,000.00
		\$ 4,000.00	\$ 4,000.00
\$ -	\$ -	\$ 8,000.00	\$ 8,000.00
\$ 6,500.00			\$ 6,500.00
\$ 6,500.00	\$ -	\$ 8,000.00	\$ 8,000.00
			\$ -
			\$ -
\$ 100.00		\$ 500.00	\$ 600.00
\$ 100.00		\$ 50.00	\$ 150.00
\$ 200.00	\$ -	\$ 550.00	\$ 750.00
\$ 500.00			
\$ 500.00			\$ 500.00
\$ 1,000.00			\$ 1,000.00
\$ 2,000.00	\$ -	\$ -	\$ 2,000.00
\$ 100.00		\$ 150.00	\$ 250.00
\$ 100.00		\$ 150.00	\$ 250.00
\$ 100.00		\$ 150.00	\$ 250.00
\$ 1,000.00		\$ 500.00	\$ 1,500.00
\$ 1,300.00	\$ -	\$ 950.00	\$ 2,250.00
\$ 1,000.00		\$ 2,000.00	\$ 3,000.00
\$ 1,000.00	\$ -	\$ 2,000.00	\$ 3,000.00
\$ 10,000.00	\$ -	\$ 12,000.00	\$ 13,000.00

Program Title: _____

2. Program Budget Narrative (Refer to Page B-5, Section IV, A2)
(Must not exceed two pages)

Program Title: _____

3. (a) Explain the total program cost per participant hour. **(Total program cost divided by total participant hours equals total program cost per participant hour.)** This information will be used for YAB information only and will not be used for scoring.

(b) Explain the proposal request cost per participant hour. **(The proposal request amount divided by total participant hours equals the proposal request cost.)**

(c) List any cost or fees charged to participants. (Including purchase of equipment, travel, etc.) This information is for YAB committee information only and will not be used in scoring.

Program Title: _____

(d) ORGANIZATION SUPPORT & PROGRAM REVENUES (Refer to Page B-6, Section IV, B): (9 points possible)

a. Explain the amount of direct support provided or anticipated to the organization from other CBJ funding sources. **(Do not include previous or anticipated YAB grant funds)**

i. Total amount of direct CBJ funding received by your organization: ____

ii. Total organization budget: _____

iii. Percentage of CBJ income of total budget

(“a” divided by “b” equals “c”): _____

iv. Where is the CBJ funding coming from?

b. Description of CBJ indirect support provided to your organization.

Program Title: _____

c. List all estimated sources of revenue for this program

Admissions	\$ _____
Number of participants X amount	
Memberships	
Ticket Sales	
Corporate Support	\$ _____
(Itemize source and amount)	
Foundation Support	\$ _____
(Itemize source and amount)	
Other Private Support	\$ _____
(Itemize source and amount)	
Governmental Support	\$ _____
(Indicate specific organization or source)	
(Do not include YAB funding)	
Federal Support	\$ _____
(Indicate specific organization or source)	
Local Support	\$ _____
(Itemize source and amount)	
Other Revenue	\$ _____
(Itemize source and amount)	
Total Projected Revenue for this project:	\$ _____

Program Title: _____

V. PROPOSAL PRESENTATION (4 points possible)

- A.** Submit all information requested, in the correct order, and in the format specified.
- B.** Submit only current information regarding your participation numbers, financial information, resumes of personnel, organizational charts, etc.
- C.** Submit plan for the type of materials for which the organization plans to display the following information: **“This program is partially funded by the citizens of the City and Borough of Juneau through sales tax revenues.”**

VI. OPTIONAL INFORMATION (2 points possible)

- A.** Submit a maximum of two letters of support.

General Comments about the Request for Youth Activities Grant (RFYAG) application packet:

March 1, 2024

To whom it may concern:

I'm Jake Carpenter, and I am writing to you in my capacity as a parent, scoutmaster, and an actively involved member of our vibrant Juneau community. It is with great enthusiasm that I extend my support for the "Juneau Live!" Studio TV production camps hosted by Resurrection Lutheran Church.

In a world that is increasingly digital, it's imperative that our children are not only consumers of media but also skilled creators who understand the intricacies of production. The Juneau Live! Studio TV Production Camps offer a unique opportunity for our youth to immerse themselves in the creative and technical sides of television production. This hands-on experience equips them with valuable skills such as storytelling, teamwork, and technical proficiency in audio and video production. My child has said that learning live production was the most fun she's ever had at a camp—she's excited to participate the next time around as a mentor.

As a parent, I have witnessed the excitement and growth in my own child who participated in these camps. They came away with not just new skills but also a heightened sense of confidence and a deeper appreciation for the media they consume daily. As a scoutmaster, I see the importance of such educational experiences that complement traditional learning, fostering creativity, critical thinking, and a can-do attitude among our young members.

Moreover, these camps contribute significantly to our community's cultural and educational landscape. They provide a safe, engaging, and productive environment where children can explore their interests, discover new talents, and express their creativity. I wholeheartedly believe that these camps are a vital addition to Juneau, offering not just entertainment but education, skill development, and a platform for our children to shine.

Thank you for considering my support for this valuable program. I am looking forward to seeing more of our youth benefit from this wonderful opportunity and am available to discuss further or assist in any way to ensure its continued success.

Warmest regards,

Jake Carpenter

jake@jakecarpenter.com

907-321-8693

245 Behrends Ave

Juneau, AK 99801

Subject: Letter of Support for CBJ YAB Grant Application

March 1, 2024 at 12:47:27 PM Alaska Standard Time

From: Keith Giles

To: Bradley Perkins

Attachments: image001.jpg

Dear Friends:

Resurrection Lutheran Church will be presenting "Juneau Live Studio TV Production Camp soon. I believe in the mission of the camp. Exposing young people to the world of television production. Learning the pieces that go together to produce a live music show involves students in so many different creative activities; sound, lighting, show running, camera operation, directing, and stage management, to mention a few. Skills which have relevance outside of a television studio. Skills that are needed in our community! The folks at Resurrection are a dedicated and time-generous group. Any support they can get will be leveraged by many hours of volunteer effort.

Please add my endorsement for this worthwhile enterprise.

Warmest regards,

Keith Giles, owner

Alaska Music One

Juneau Alaska

907-789-0218

k.giles@alaskamusicone.com